

Five Roll Refiner

HFS 140

HFS 180

for the refining of chocolate paste and couverture within automatic processing lines

Technical features

- 5 special rollers in centrifugal casting with
 - wear-resistant chilled cast layer and optimum heat transition
 - possibility for repeated regrinding without adversely affecting the roller properties
- Automatic roller pressing regulations, which can be matched to the processing conditions for every paste
- Automatic roller cooling for constant roller temperatures and thus high, constant performance and quality of the end product
- Setting motors for fixed gap adjustment for the draw-in rollers
- Storage hopper with metering flap and level monitoring
- Programmable control
- Terminal for interactive operation with logic control for recipes, as well as for recording and evaluation of operational data
- Safety systems to protect against running dry and overloading
- CE conformance (meets EU machinery guideline), if required UL or CSA guideline possible

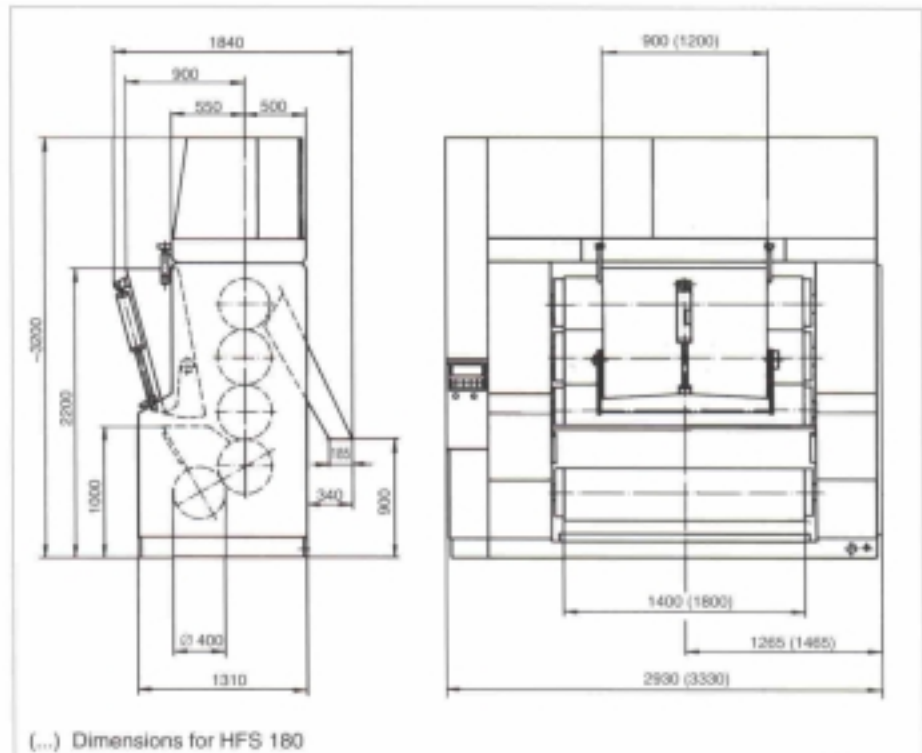
Alternative

The machine is also supplied with a simplified control and regulation system.

– youngest machine generation

the highest technical level and commitment to upholding the over 150 years of company tradition in progressive roll refiner construction

- for high capacities with a constant and reproducible fineness
- with high economic efficiency and low maintenance requirements



Technical Data

	HFS 140	HFS 180
Capacity	max. 1200 kg/h	max. 1500 kg/h
Dimensions of the rollers effective length diameter	1400 mm 400 mm	1800 mm 400 mm
Capacity of the storage hopper	approx. 260 kg	approx. 380 kg
Connected load	78 kW	92 kW
Cooling water consumption (at +12 °C, min. pressure 1 bar)	approx. 1,4 m ³ /h	approx. 1,8 m ³ /h
Compressed air consumption (at 4 - 6 bar)	approx. 0,3 m ³ /h	approx. 0,3 m ³ /h
External dimensions (length x width x height)	2930 x 1840 x 3200 mm	3330 x 1840 x 3200 mm
Weight, net	approx. 7800 kg	approx. 9200 kg